



Aras Office Connector

12.0R4

Upgrading from Version 12.0R1

Document #: 12.0R4.2020072401

Last Modified: 9/24/2020

Copyright Information

Copyright © 2020 Aras Corporation. All Rights Reserved.

Aras Corporation
100 Brickstone Square
Suite 100
Andover, MA 01810

Phone: 978-691-8900

Fax: 978-794-9826

E-mail: support@aras.com

Website: <https://www.aras.com>

Notice of Rights

Copyright © 2020 by Aras Corporation. This material may be distributed only subject to the terms and conditions set forth in the Open Publication License, V1.0 or later (the latest version is presently available at <http://www.opencontent.org/openpub/>).

Distribution of substantively modified versions of this document is prohibited without the explicit permission of the copyright holder.

Distribution of the work or derivative of the work in any standard (paper) book form for commercial purposes is prohibited unless prior permission is obtained from the copyright holder.

Aras Innovator, Aras, and the Aras Corp "A" logo are registered trademarks of Aras Corporation in the United States and other countries.

All other trademarks referenced herein are the property of their respective owners.

Notice of Liability

The information contained in this document is distributed on an "As Is" basis, without warranty of any kind, express or implied, including, but not limited to, the implied warranties of merchantability and fitness for a particular purpose or a warranty of non-infringement. Aras shall have no liability to any person or entity with respect to any loss or damage caused or alleged to be caused directly or indirectly by the information contained in this document or by the software or hardware products described herein.

Table of Contents

Send Us Your Comments	4
Document Conventions	5
1 Overview	6
2 Prerequisites	7
2.1 Checking for Eligibility	7
2.2 Obtaining Upgrade Files	8
3 Upgrading Aras Office Connector Server Components	9
3.1.1 <i>Applying the Solution AML</i>	9
3.1.2 <i>Confirming the Installation</i>	10
4 Upgrading Aras Office Connector Client Components	12
4.1 Installing the Microsoft Office Add-in	12
4.2 Confirming the Installation	17

Send Us Your Comments

Aras Corporation welcomes your comments and suggestions on the quality and usefulness of this document. Your input is an important part of the information used for future revisions.

- Did you find any errors?
- Is the information clearly presented?
- Do you need more information? If so, where and what level of detail?
- Are the examples correct? Do you need more examples?
- What features did you like most?

If you find any errors or have any other suggestions for improvement, indicate the document title, and the chapter, section, and page number (if available).

You can send comments to us in the following ways:

Email:

support@aras.com

Subject: Aras Innovator Documentation

Or,

Postal service:

Aras Corporation

100 Brickstone Square

Suite 100

Andover, MA 01810

Attention: Aras Innovator Documentation

Or,

FAX:

978-794-9826

Attn: Aras Innovator Documentation

If you would like a reply, provide your name, email address, address, and telephone number.

If you have usage issues with the software, visit <https://www.aras.com/support/>

Document Conventions

The following table highlights the document conventions used in the document:

Table 1: Document Conventions

Convention	Description
Bold	Emphasizes the names of menu items, dialog boxes, dialog box elements, and commands. Example: Click OK .
Code	Code examples appear in <code>courier</code> font. It may represent text you type or data you read.
Yellow highlight	Code highlighted in yellow draws attention to the code that is being indicated in the content.
Yellow highlight with red text	Red text highlighted in yellow indicates the code parameter that needs to be changed or replaced.
<i>Italics</i>	Reference to other documents.
Note:	Notes contain additional useful information.
Warning	Warnings contain important information. Pay special attention to information highlighted this way.
Successive menu choices	Successive menu choices may appear with a greater than sign (>) between the items that you will select consecutively. Example: Navigate to File > Save > OK .

1 Overview

The steps outlined in this document describe how to upgrade Aras Office Connector version from 12.0R1 12.0R2, or 12.0R3 to version 12.0R4. These changes affect both the server database and the client machine.

Upgrades from an earlier version of Aras Office Connector, such as version 11, to version 12.0R4 are done as part of the upgrade of Aras Innovator. Upgrade Services are a benefit of a Premier Subscription package and can be requested as a service from Aras Support.

When requesting Upgrade Services from Aras Innovator 11.0 or older, please notify Aras Support that your production instance includes Office Connector.

2 Prerequisites

In order to upgrade from Aras Office Connector from version 12.0 or 12.0R2 to version 12.0R4, you will need to confirm that your software is currently eligible for upgrade. Then you will need to download the necessary materials for upgrade.

2.1 Checking for Eligibility

Please use the following procedure to check that your Aras Innovator code tree and database meet the minimum requirements to apply the Aras Office Connector Solution AML.

1. Log in to Aras Innovator as an administrator.
2. From the Main Menu select **Help --> About**.
3. Confirm that the dialog shows one of the following:
 - Aras Innovator 12.0 SP9 Build: 24090
 - Aras Innovator 12.0 SP10 Build: 25121

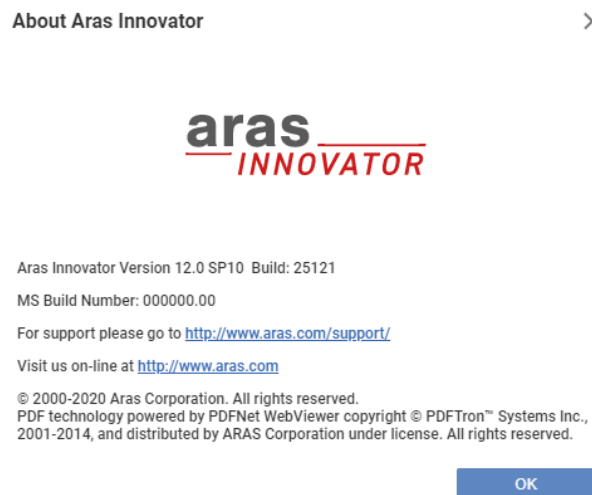


Figure 1.

4. Close the dialog.
5. From the TOC, select **Administration\Variables**.
6. Confirm that one of following sets of variables is listed:

Version Major	Version Minor	VersionServiceUpdate	VersionServicePack
12	0	0	SP9
12	0	0	SP10

If you do not meet the service pack requirements listed in the previous steps, then you should contact Aras to discuss your upgrade options.

2.2 Obtaining Upgrade Files

The upgrade files are available in the Aras Office Connector 12.0R4 CD Image, inside the **Aras Office Connector 12.0R4 Upgrade Patch.zip** file. This file contains the components necessary to upgrade both the Aras Innovator Server as well as client machines.

3 Upgrading Aras Office Connector Server Components

This section walks you through modifying the database with the required metadata. Before applying these changes, you should confirm you have all required components.

Required Components:

- Aras Innovator 12.0 SP9 or 12.0 SP10
- Aras Office Connector version 12.0R1, 12.0R2, or 12.0R3
- Aras Office Connector Feature License
- Aras Innovator Package Import Export Utilities

3.1.1 Applying the Solution AML

1. Notify users the system will be down at a scheduled time, and that they should log out of the system prior to the start of the process.

Note: It is best to give at least 24-hour notice, as well as a reminder 15 minutes prior to the upgrade.

2. Backup the database.

Note: Place this file in a safe location, as it will be necessary to restore from it if the upgrade fails.

3. Extract the contents of the **Aras Office Connector 12.0R4 Upgrade Patch.zip** file.
4. You will need to import the database package with the Package Import Export Utilities (For more information using this tool, please see the *Aras Innovator 12.0 - Package Import Export Utilities* documentation.)
 - a. You will need to enable the “Super User” login to perform this step.
 - b. Browse to the \PackageImportExportUtilities\Import\ folder and run the Import.exe file

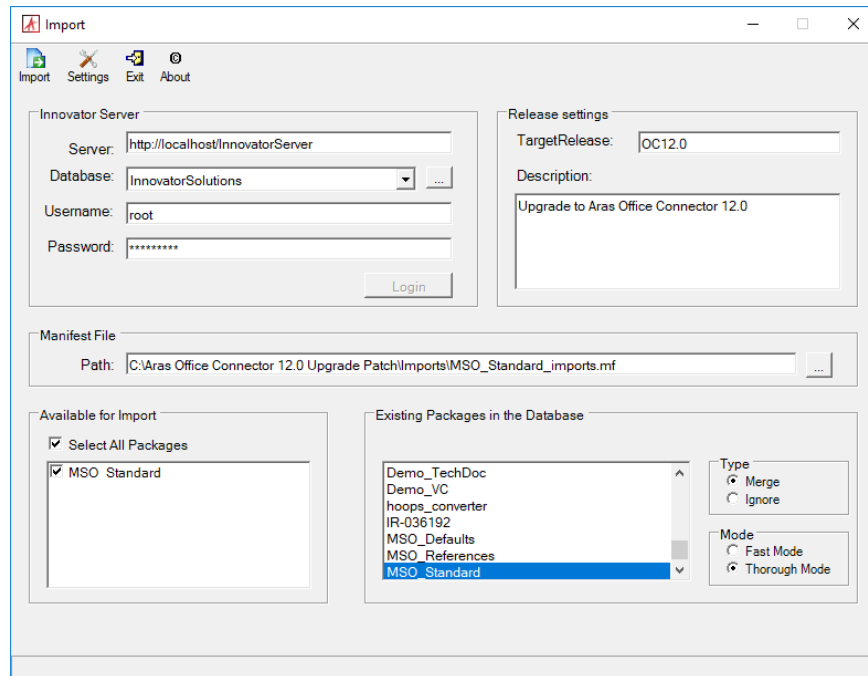


Figure 2.

- c. Input the following information:
 1. Server = The connection URL for Aras Innovator
 2. Database = The target Aras Innovator database
 3. Username = root
 4. Password = Password for “root” login (Default is “innovator”)
 5. Target Release = OC12.0R4
 6. Description = Upgrade to Aras Office Connector 12.0R4
 7. Manifest File Path = The manifest is found in the unzipped patch folder in \Aras Office Connector 12.0R4 Upgrade Patch\imports\MSO_Standard_imports.mf
 8. Available for Import = Check "MSO Standard"
 9. Type = Merge
 10. Mode = Thorough Mode
- d. Click the **Import** button.

Note: Remember to disable the “Super User” login once complete. This login should not be enabled in production.

3.1.2 Confirming the Installation

Use the following procedure to check if your database has been updated correctly.

1. Log in to Aras Innovator as an administrator
2. From the TOC, select Administration\Variables

3. Confirm the following variable

Name	Value
Office Connector	12.0R4

If at any time the installation fails, revert to your backups and contact Aras Support at support@aras.com.

4 Upgrading Aras Office Connector Client Components

The Aras Office Connector must modify Microsoft Office to add the integration components. Before applying these changes, you should confirm your installation of Microsoft Office meets the minimum requirements to run the Aras Office Connector integration.

Requirements:

- Windows 7, Windows 8.1, or Windows 10
- Microsoft Office 2013 (Enterprise or Professional editions recommended)
- Microsoft Office 2016 (Enterprise or Professional editions recommended)
- Microsoft Office 365, Desktop version
- Microsoft Office 2019 (Enterprise or Professional editions recommended)

Note: Version 2013 of Microsoft Visio is not supported.

4.1 Installing the Microsoft Office Add-in

1. Shut down all Office programs on the client PC:
 - Microsoft Outlook
 - Microsoft Word
 - Microsoft Excel
 - Microsoft PowerPoint
 - Microsoft Visio
2. Uninstall Aras Office Connector client from the local machine by going to **Control Panel --> Programs and Features**.
3. Copy the `ArasOfficeConnectorSetup.msi` to the Client PC.

4. Run the `ArasOfficeConnectorSetup.msi`
5. Click **Next**.

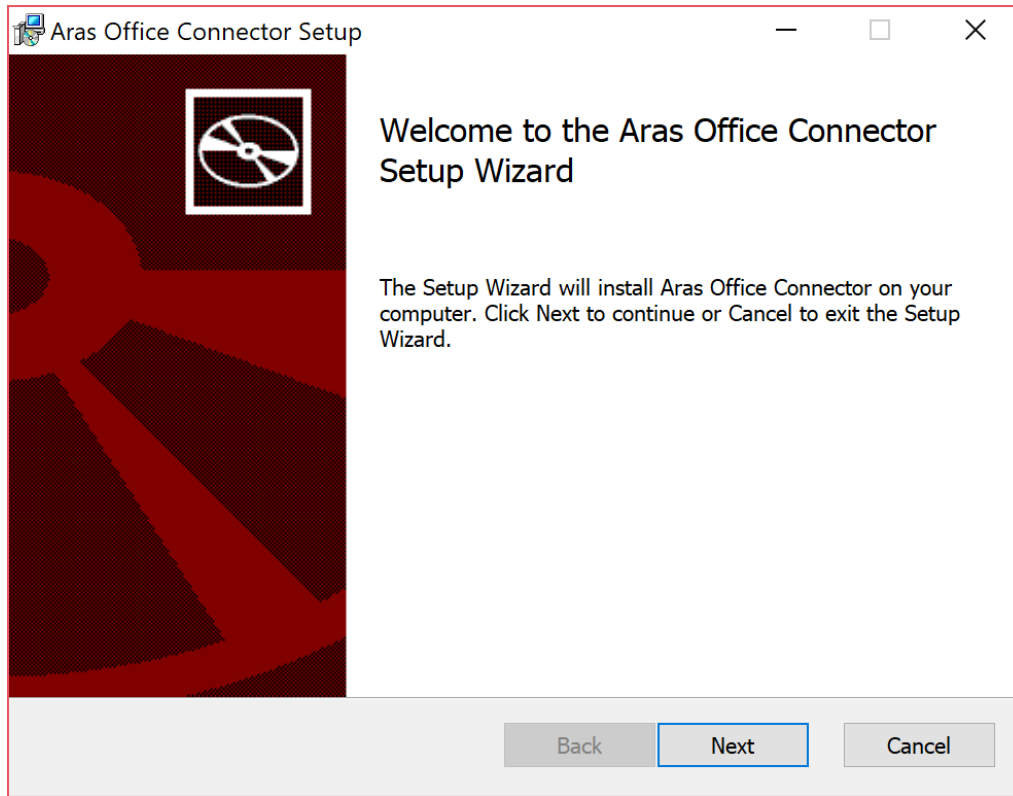


Figure 3.

6. Specify the path where the Aras Office Connector client components will be installed in the Install **Aras Innovator Microsoft Office Connector to:** field.
 - a. (Optional) Check the **Install Office Connector for all users** option to install the extension for all users specified on the PC.

Note: By default it will be installed to `%LOCALAPPDATA%\Aras Corporation\Aras Innovator Microsoft Office Connector\`
Selecting the **Install Office Connector for all users** changes the default directory to `C:\Program Files (x86)\Aras Innovator Microsoft Office Connector\`

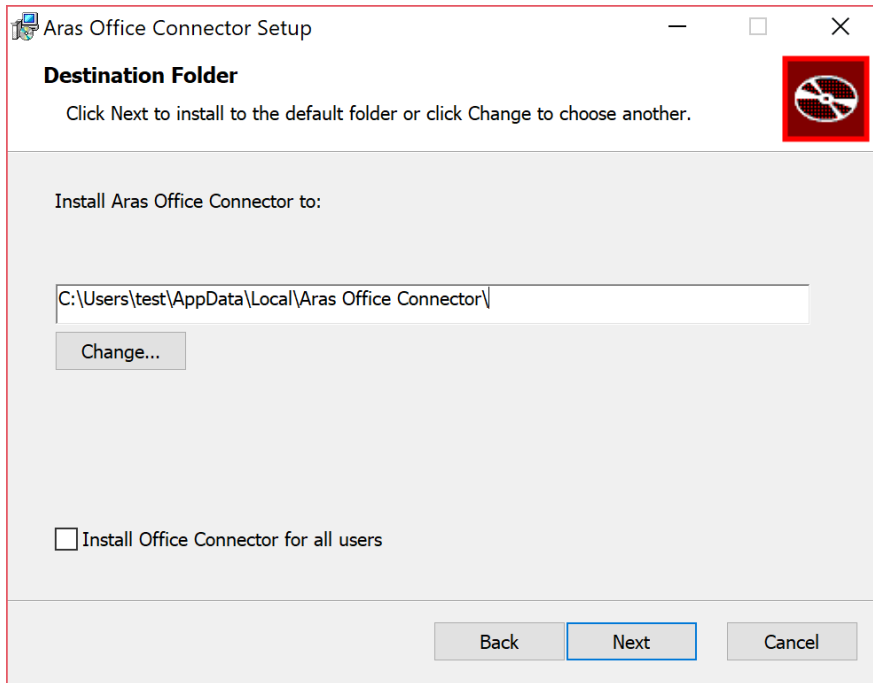


Figure 4.

7. Specify the working directory that Aras Office Connector will use to download files locally.

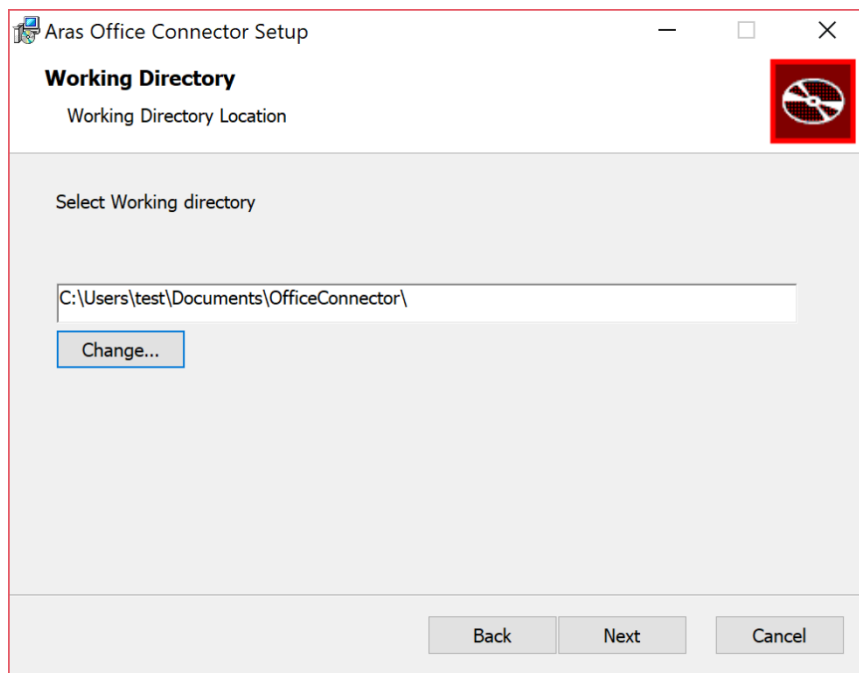


Figure 5.

8. (Optional) Add any preconfigured URLs to connect to Aras Innovator.

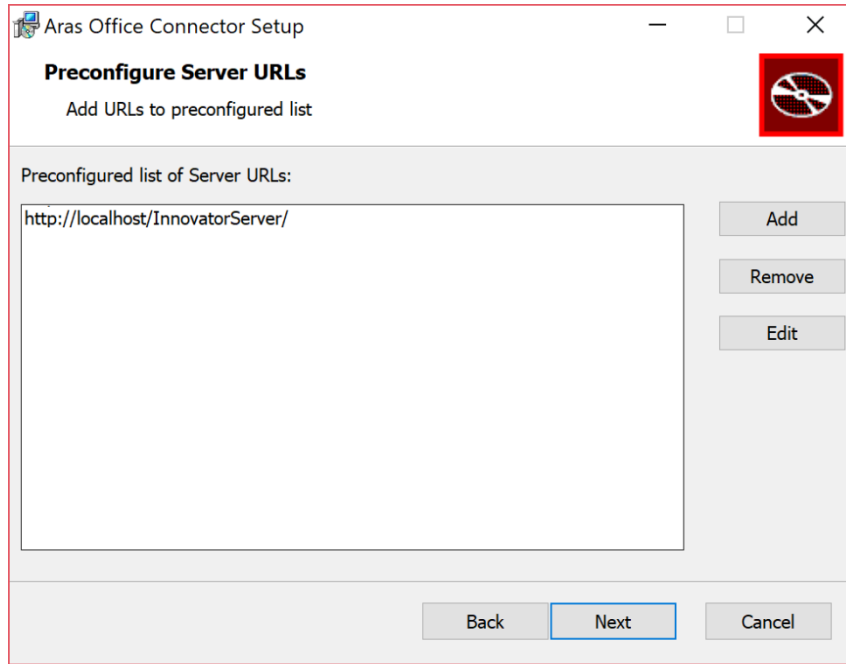


Figure 6.

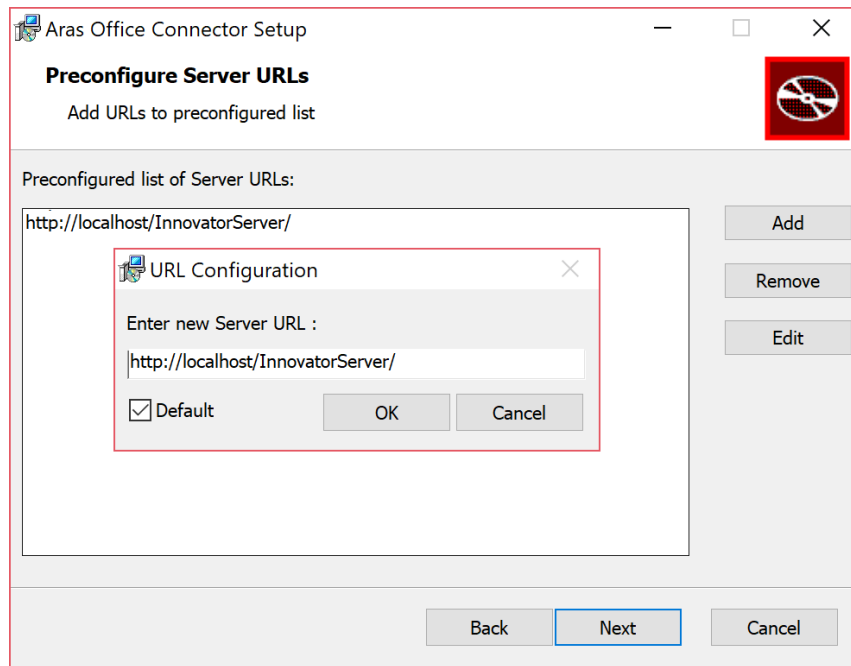


Figure 7.

Note: These URLs will be preconfigured for the End User, but they will be able to change, add, or remove any URLs later.

- Specify **Custom** to select the MS Office applications where Aras Office Connector should be installed, or **Complete** to install the add-on on all MS Office Applications.

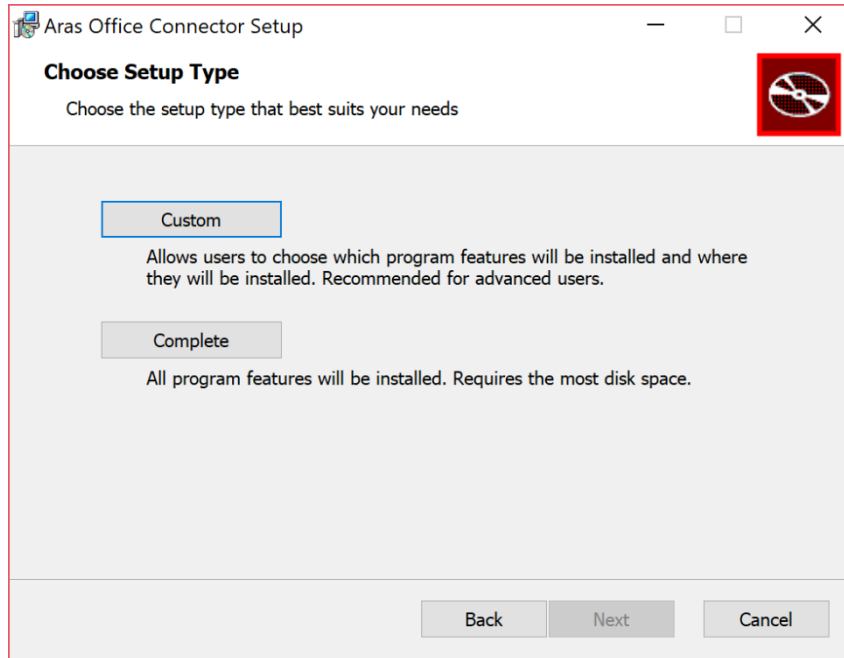


Figure 8.

- Once MS Office applications have been selected, click **Install**.

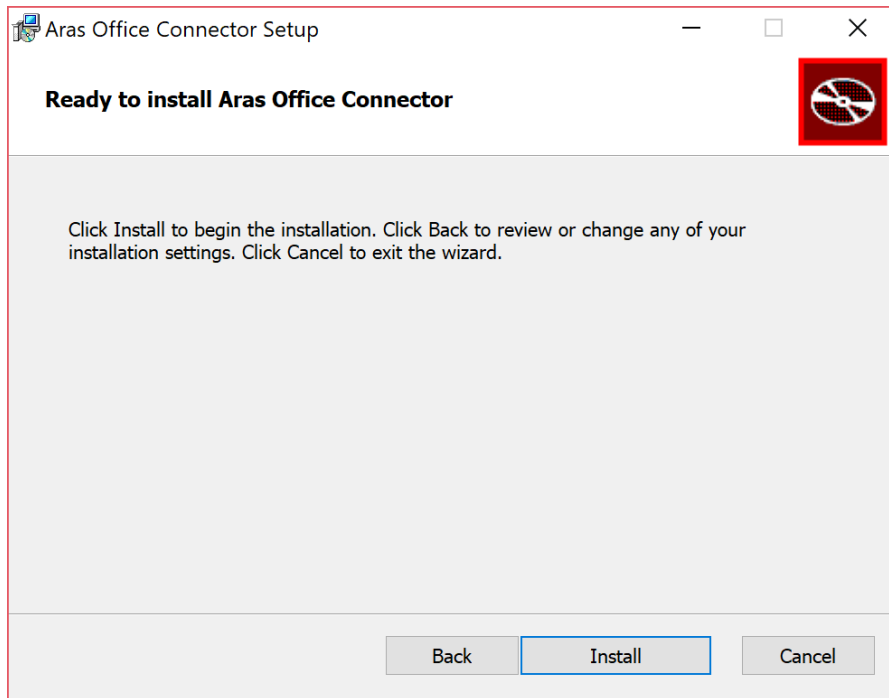


Figure 9.

11. Click **Finish** to exit from the installation.

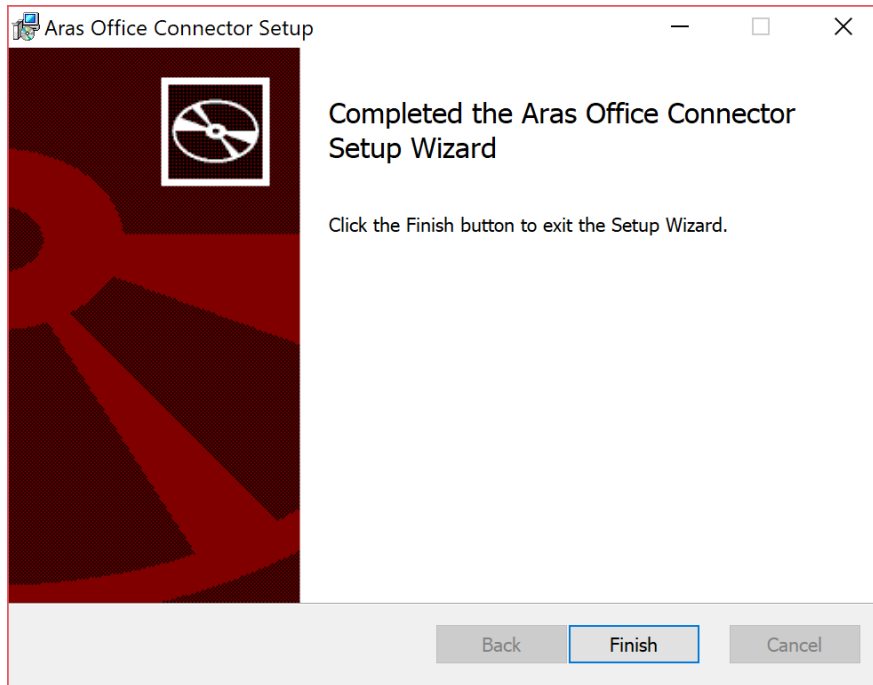


Figure 10.

4.2 Confirming the Installation

Use the following procedure to check that your database has been updated correctly.

1. Open Microsoft Word.
2. Confirm that Aras ribbon has been added to Microsoft Word application.

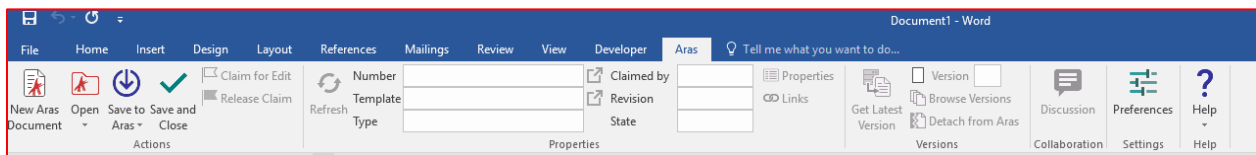


Figure 11.

3. Confirm the version and build of Aras Office Connector by going to the **Aras** tab and selecting **Help --> About**.

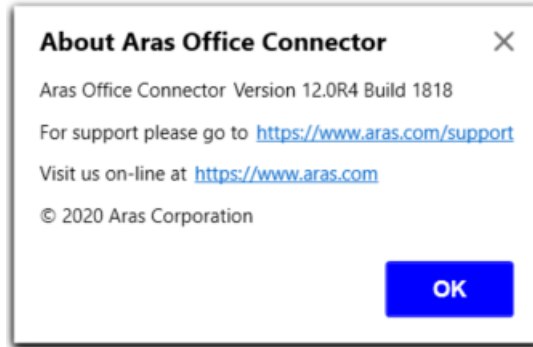


Figure 12.